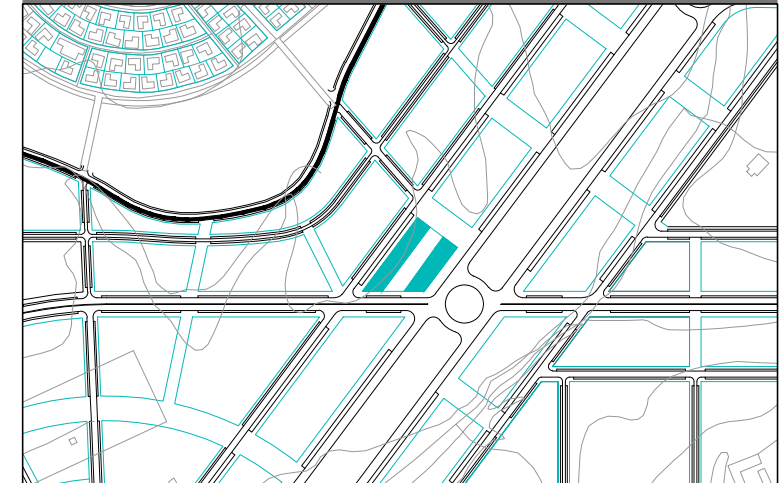


# BPO 7 VIVIENDAS PROTEGIDAS

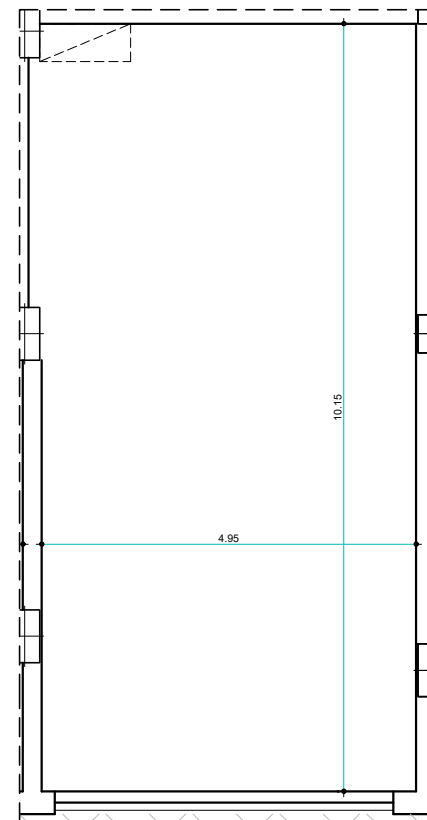
251 VPO, LOCALES, GARAJES Y TRASTEROS



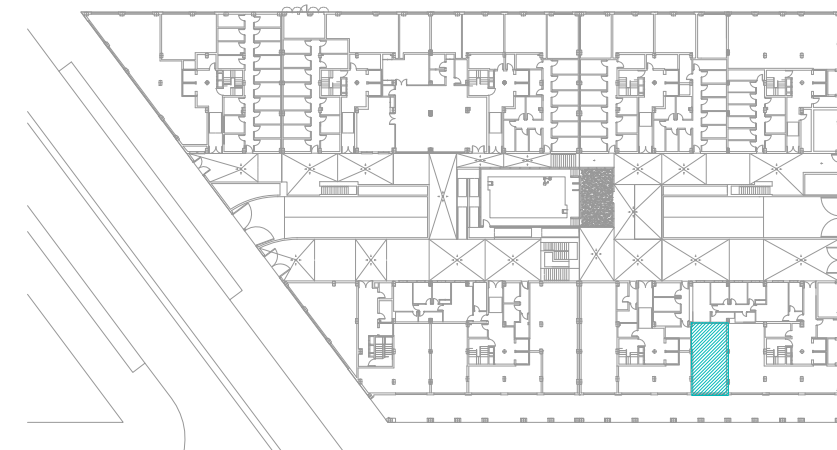
MANZANA BPO-7, SEN-1 "ENTRENÚCLEOS". DOS HERMANAS (SEVILLA)

## LOCAL 21

**SUPERFICIE CONSTRUIDA: 55,50m<sup>2</sup>**

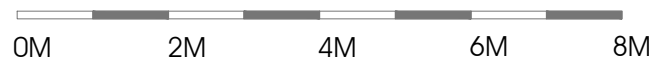


UBICACIÓN: planta baja.



PROMUEVE

ESCALA GRÁFICA



BPO-7 VIVIENDAS PROTEGIDAS S.L.

